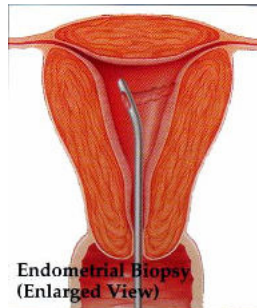


## ENDOMETRIAL BIOPSY

Endometrial biopsy is the removal of a small piece of tissue from the lining of the uterus (endometrium) for examination. This test is best performed before your menstrual period.



Patient instructions:

- Take Motrin (ibuprofen) **if you are not allergic** 1-2 hours before the procedure
- You will not need a ride home
- No bathes, hot tubs, intercourse or tampons for about 3-5 days

You lie on your back with your feet supported by foot rests. Your health care provider gently inserts an instrument (speculum) into the vagina to hold it open so that your cervix can be viewed.

The cervix may then be gently grasped with an instrument to hold the uterus steady. Another instrument may be needed to gently stretch the cervical opening if there is tightness. An instrument is gently passed through the cervix into the uterus to collect the tissue sample. The instruments may feel cold. You may feel some pain when the cervix is grasped. You may have some cramping as the instruments enter the uterus and the sample is collected. When the physician is done she will remove the instruments and you may get dressed.

The test is done to find the cause of:

- Abnormal menstrual periods (heavy, prolonged, or irregular bleeding)
- Bleeding after menopause
- Bleeding from taking hormone therapy medicines
- Thickened uterine lining seen on ultrasound